

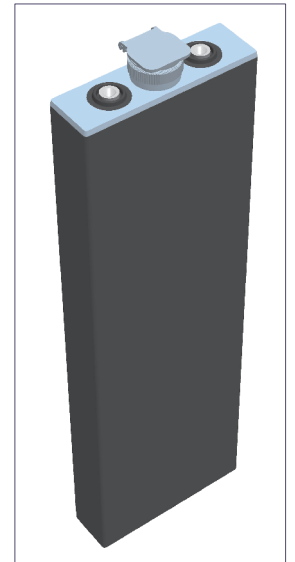
2PzB 84

(2V84Ah/5HR)



Specification

Voltage Per Unit	2V(single cell)
Capacity	84Ah@5hr-rate to 1.70V per cell @25°C
Weight	Approx. without electrolyte 5.2 Kg Approx. including electrolyte 6.2 Kg
High Rate Discharge Current	84 A
Operating Temperature Range	Discharge: -40°C~60°C Charge: -20°C~50°C Storage: -40°C~60°C
Optimal Operating Temperature Range	25°C ± 5°C
Maximum Charging Current	12.6 A
Cycle charged	2.65 to 2.85 VDC/unit Average at 25°C
Self Discharge	Self-discharge ratio less than 5% per month at 25°C. Please charge batteries before using.
Terminal	D2(M10 Copper Terminals) & D4(Lead Terminals)
Dimensions (L×W×H×TH)	45mm×158mm×328mm×358mm(Total High)



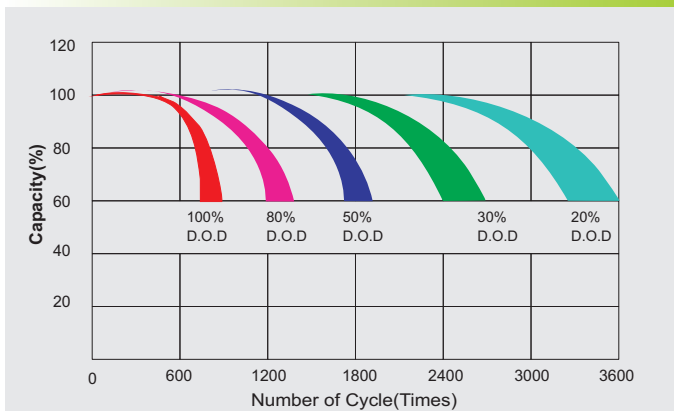
Constant Current Discharge Characteristics : A(25°C)

F.V/Time	30MIN	1HR	2HR	3HR	4HR	5HR	6HR	8HR	10HR
1.60V	79.6	55.7	32.3	24.2	19.7	17.7	15.3	11.9	9.9
1.65V	77.7	54.4	31.5	23.6	19.3	17.3	15.0	11.7	9.6
1.70V	75.6	52.9	30.7	23.0	18.7	16.8	14.6	11.3	9.4
1.75V	72.7	50.9	29.5	22.1	18.0	16.2	14.0	10.9	9.0
1.80V	69.4	48.6	28.2	21.1	17.2	15.4	13.4	10.4	8.6
1.85V	65.7	46.1	26.7	20.0	16.3	14.6	12.7	9.9	8.2

Constant Power Discharge Characteristics : W(25°C)

F.V/Time	30MIN	1HR	2HR	3HR	4HR	5HR	6HR	8HR	10HR
1.60V	148.8	107.3	63.4	47.9	39.2	35.2	30.5	23.8	19.6
1.65V	146.2	105.1	62.1	47.0	38.4	34.5	29.9	23.3	19.3
1.70V	143.7	102.3	60.5	45.9	37.4	33.6	29.1	22.7	18.7
1.75V	138.3	98.4	58.2	44.1	36.0	32.3	28.0	21.8	18.0
1.80V	132.2	94.5	55.8	42.1	34.4	30.9	26.7	20.8	17.2
1.85V	126.0	90.2	53.3	40.0	32.6	29.2	25.3	19.7	16.3

Life characteristics of cyclic use



Charge characteristic Curve for standby use

