



RA12-90G (12V90Ah)

RA12-90G is GEL Standby battery with 10 + years floating design life time .The solid Gel protects no way to suffer electrolyte stratification and ensure mild corrosion, its special separator eradicates infection between plates to prevent short circuit. it offers extra-durable performance under extreme temperature.



Specification

Cells Per Unit	6
Voltage Per Unit	12
Capacity	90Ah@20hr-rate to 1.75V per cell @25°C
Weight	Approx. 28.5Kg
Max. Discharge Current	900 A (5 sec)
Internal Resistance	Approx. 7.8mΩ
Operating Temperature Range	Discharge: -40°C~60°C Charge: -20°C~50°C Storage: -40°C~60°C
Normal Operating Temperature Range	25°C±5°C
Float charging Voltage	13.6 to 13.8 VDC/unit Average at 25°C
Recommended Maximum Charging Current Limit	18A
Equalization and Cycle Service	14.2 to 14.4 VDC/unit Average at 25°C
Self Discharge	RITAR Valve Regulated Lead Acid (VRLA) batteries can be stored for more than 6 months at 25°C. Self-discharge ratio less than 3% per month at 25°C. Please charge batteries before using.
Terminal	Terminal F11/F15
Container Material	A.B.S. (UL94-HB), Flammability resistance of UL94-V1 can be available upon request.



MH28539



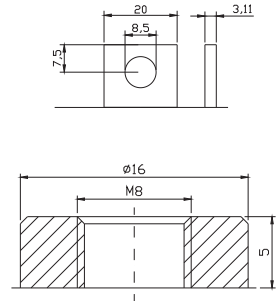
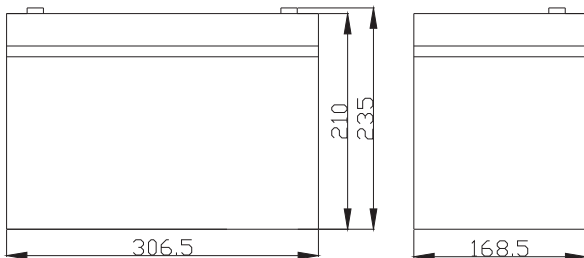
G4M20206-0910-E-16



ISO9001:2000 Certificate

Dimensions

Unit: mm Dimension: 306.5(L)×168.5(W)×210(H)



Constant Current Discharge Characteristics: A (25°C)

F.V/Time	5MIN	10MIN	15MIN	30MIN	1HR	2HR	3HR	4HR	5HR	8HR	10HR	20HR
9.60V	235.8	175.6	137.4	90.36	52.96	31.67	21.87	18.12	15.25	10.42	8.641	4.611
10.0V	229.0	167.1	134.6	88.86	52.71	31.43	21.79	18.03	15.16	10.33	8.558	4.527
10.2V	222.2	161.2	132.5	88.08	52.22	31.19	21.62	17.95	15.07	10.25	8.475	4.443
10.5V	201.9	150.5	127.6	88.26	51.73	30.96	21.53	17.78	14.89	10.16	8.392	4.359
10.8V	184.3	138.9	119.0	87.59	50.51	30.40	20.95	17.36	14.62	9.995	8.309	4.276
11.1V	159.2	125.5	108.0	82.79	47.99	29.05	20.03	16.52	14.00	9.571	8.060	4.024

Constant Power Discharge Characteristics: W (25°C)

F.V/Time	5MIN	10MIN	15MIN	30MIN	1HR	2HR	3HR	4HR	5HR	8HR	10HR	20HR
9.60V	2487	1870	1498	1014	611.9	373.3	260.2	215.9	182.0	124.4	103.3	55.28
10.0V	2438	1813	1474	1002	610.5	371.3	260.3	215.7	181.5	123.8	102.6	54.32
10.2V	2411	1765	1457	1005	605.8	369.1	259.2	215.2	180.9	123.0	101.7	53.32
10.5V	2220	1663	1406	1008	600.3	366.4	258.2	213.2	178.7	122.0	100.7	52.31
10.8V	2046	1551	1315	1001	589.2	361.7	251.2	208.3	175.5	119.9	99.71	51.31
11.1V	1818	1419	1197	951.9	564.0	348.3	240.3	198.3	168.0	114.9	96.72	48.29

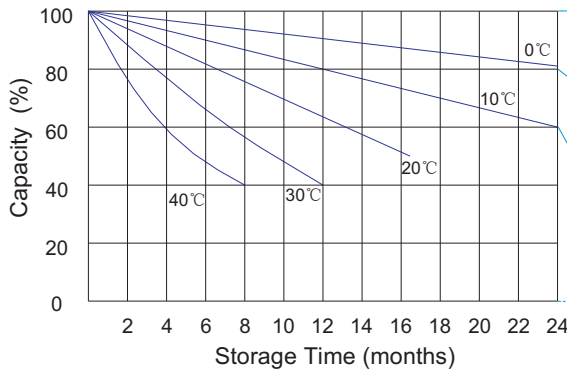
All mentioned values are average values.



Effect of temperature on long term float life



Storage characteristic



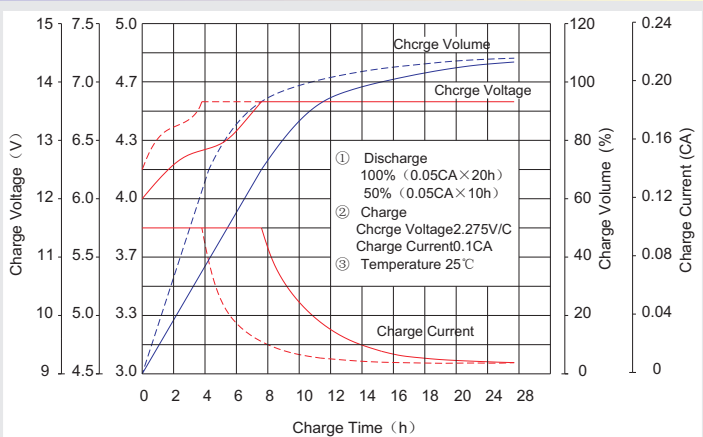
Supplementary charge required (Carry out supplementary charge before use if 100% capacity is required)

Supplementary charge required before use. This supplementary charge will help to recover the capacity and should be made as early as possible.

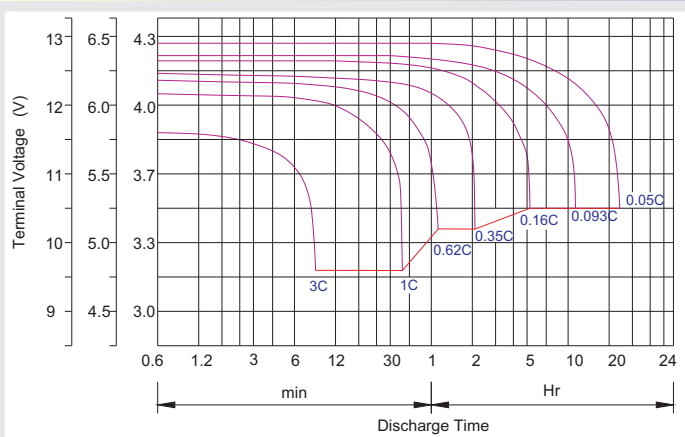
Supplementary charge may often fail to recover the capacity. The battery should never be left standing till this state is reached

Supplementary charge and storage guidelines

Charge characteristic Curve for standby use



Discharge characteristic Curve



Capacity Factors With Different Temperature

Battery Type		-20°C	-10°C	0°C	5°C	10°C	20°C	25°C	30°C	40°C	45°C
GEL Battery	6V&12V	50%	70%	83%	85%	90%	98%	100%	102%	104%	105%
	2V	60%	75%	85%	88%	92%	99%	100%	103%	105%	106%
AGM Battery	6V&12V	46%	66%	76%	83%	90%	98%	100%	103%	107%	109%
	2V	55%	70%	80%	85%	92%	99%	100%	104%	108%	110%

Discharge Current VS. Discharge Voltage

Final Discharge Voltage V/cell	1.75V	1.70V	1.60V
Discharge Current (A)	(A) ≤ 0.2C	0.2C < (A) < 1.0C	(A) ≥ 1.0C

Maintenance & Cautions

Float Service:
※ Every month, recommend inspection every battery voltage.
※ Every three months, recommend equalization charge for one time.
Equalization charge method:
Discharge: 100% rate capacity discharge.
Charge: Max. current 0.2CA, constant voltage 2.35-2.4V/Cell charge 24h.
※ Effect of temperature on float charge voltage: -3mV/°C/Cell.
※ Length of service life will be directly affected by the number of discharge cycles, depth of discharge, ambient temperature and charging voltage.

Charge the batteries at least once every six months, if they are stored at 25°C.

Charging Method:

Constant Voltage	-0.2Cx2h+2.35-2.4V/cellx24h, Max. Current 0.2CA
Constant Current	-0.2Cx2h+0.1CAx12h
Fast	-0.2Cx2h+0.3CAx4.0h