



RA6-200S(6V200Ah)

Specification

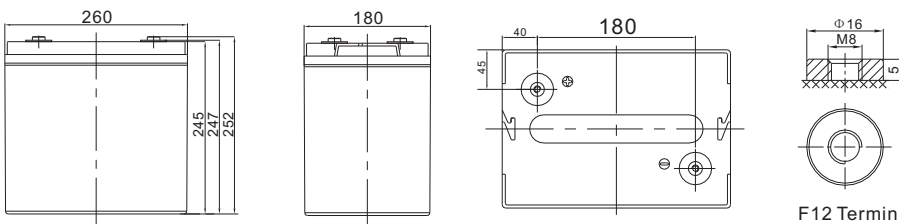
Cells Per Unit	3
Voltage Per Unit	6
Nominal Capacity	200Ah@10hour-rate to 1.80V per cell @25°C
Weight	Approx. 30.0 Kg (Tolerance ±2%)
Internal Resistance	Approx. 1.8 mΩ
Terminal	F12(M8)
Max. Discharge Current	2000A (5 sec)
Short Circuit Current	3850A
Design Life	12 years (Float charging)
Recommended Maximum Charging Current	60.0 A
Reference Capacity	C3 155.1AH C5 178.5AH C10 200.0AH C20 212.0AH
Standby Use Voltage	6.80 V~6.90 V @ 25°C Temperature Compensation: -3mV/°C/Cell
Cycle Use Voltage	7.30 V~7.40 V @ 25°C Temperature Compensation: -4mV/°C/Cell
Operating Temperature Range	Discharge: -20°C~60°C Charge: 0°C~50°C Storage: -20°C~60°C
Normal Operating Temperature Range	25°C±5°C
Self Discharge	RITAR Valve Regulated Lead Acid (VRLA) batteries can be stored for up to 6 months at 25°C and then recharging is recommended. Monthly Self-discharge ratio is less than 3% at 25°C. Please charge batteries before using.
Container Material	A.B.S. UL94-HB, UL94-V0 Optional.



RA series is a general purpose battery with 12 years design life in float service. It meets with IEC, JIS, BS and YDT standards. With advanced AGM valve regulated technology and high purity raw material, the RA series battery maintains high consistency for better performance and reliable standby service life. It is suitable for UPS/EPS, Telecom, power grid, medical equipment, emergency light and security system applications.



Dimensions



Length	260±2mm (10.2 inches)
Width	180±2mm (7.09 inches)
Height	245±2mm (9.65 inches)
Total Height	252±2mm (9.92 inches)
Terminal	Value
M5	6~7 N*m
M6	8~10 N*m
M8	10~12 N*m

Unit: mm

Constant Current Discharge Characteristics : A (25°C)

F.V/Time	10MIN	15MIN	30MIN	1HR	2HR	3HR	4HR	5HR	8HR	10HR	20HR
1.60V	446.6	351.4	211.9	124.4	74.5	54.7	44.4	37.5	25.1	21.3	10.9
1.65V	433.3	342.2	207.3	122.1	73.4	54.0	43.9	37.1	24.8	21.1	10.8
1.70V	415.8	330.1	201.1	119.0	72.0	53.0	43.2	36.5	24.5	20.8	10.7
1.75V	393.2	314.3	193.1	115.0	70.0	51.7	42.2	35.7	24.0	20.5	10.6
1.80V	364.4	294.1	182.6	109.8	67.5	50.0	40.9	34.7	23.4	20.0	10.4
1.85V	328.3	268.5	169.3	103.0	64.2	47.8	39.2	33.4	22.7	19.4	10.1

Constant Power Discharge Characteristics : WPC (25°C)

F.V/Time	10MIN	15MIN	30MIN	1HR	2HR	3HR	4HR	5HR	8HR	10HR	20HR
1.60V	770	624	391	236	143	106	86.6	73.4	49.7	42.5	21.9
1.65V	767	620	388	234	142	105	86.0	72.9	49.3	42.2	21.7
1.70V	745	603	378	229	140	104	84.7	71.9	48.7	41.7	21.5
1.75V	717	583	367	222	137	102	83.1	70.7	47.9	41.0	21.2
1.80V	676	553	351	213	133	98.7	80.9	68.9	46.9	40.1	20.8
1.85V	620	512	328	202	127	94.7	77.8	66.5	45.4	38.9	20.3

(Note) The above characteristics data are average values obtained within three charge/discharge cycle not the minimum values.

RA6-200S(6V200Ah)



Discharge Characteristics Curve



Charge Characteristic Curve For Standby Use



Cycle Life In Relation To Depth Of Discharge



Relationship Between Charging Voltage And Temperature



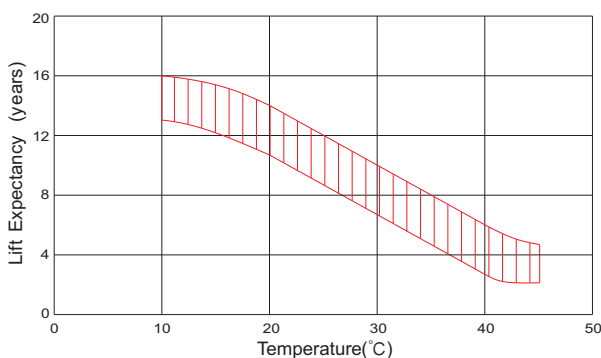
Temperature Effects On Capacity



Storage Characteristics



Effect Of Temperature On Long Term Life



Life Characteristics Of Standby Use



(Note) All above information shall be changed without prior notice, Ritar reserves the right to explain and update the latest information.